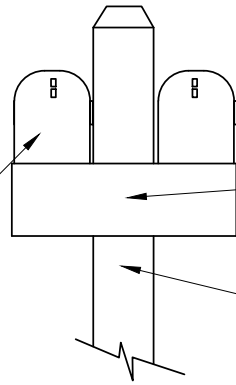


NOTE:  
TYPICAL GROUPING MAY  
VARY FROM 1 TO 2 BOXES  
AS DETERMINED BY THE  
UNITED STATES POSTAL  
SERVICE

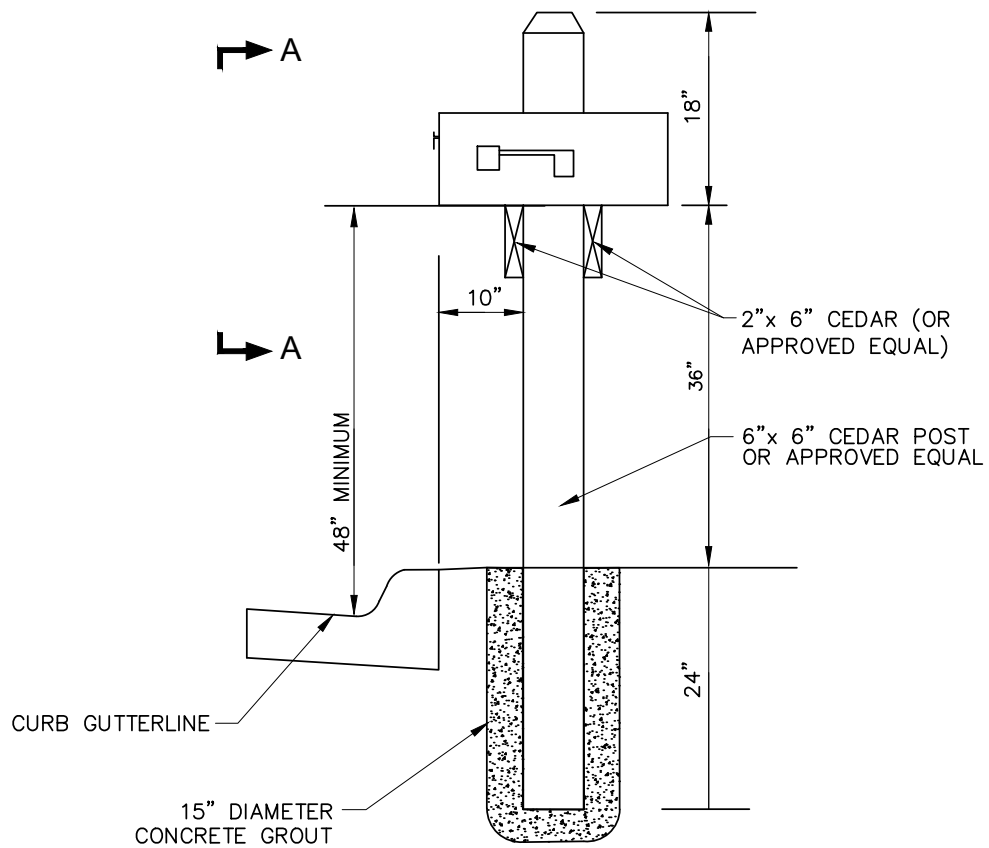
U. S. POST OFFICE  
APPROVED MAIL BOX  
(BLACK IN COLOR)



2"x 6" CEDAR (OR APPROVED  
EQUAL) ATTACH TO POST  
USING 4-1/4" GALVANIZED LAG  
BOLTS

6"x 6" CEDAR POST  
OR APPROVED  
EQUAL

SECTION A-A



MAIL BOX INSTALLATION DETAIL

NO SCALE



MAILBOX INSTALLATION

(TYPICAL)

PLATE NO. LV-ST-5

DATE 01/2020